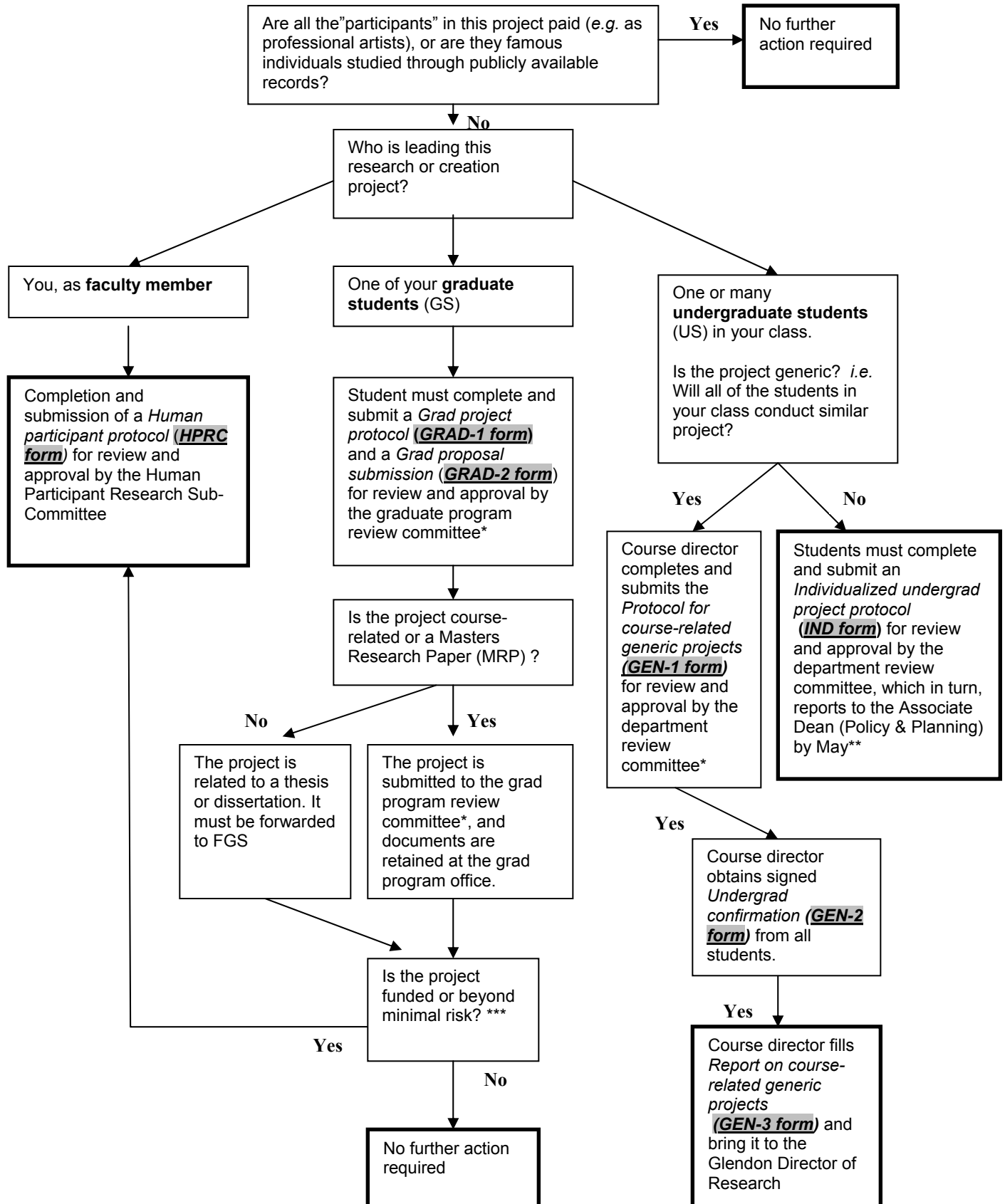




## Ethics Info Sheet 2

### Flowchart for Research and Creative Projects Involving Human Participants



Electronic versions of this and other ethics related forms are available through Research Officer Reagan Brown (rbrown@gl.yorku.ca , extension 66829).

- \* Each department/unit/graduate program decides which one of its existing committees will assume this review role. At a minimum, projects must be reviewed by two faculty members at arms-length from the work.
- \*\* In other words, the project is individualized and must be, therefore, reviewed in the same manner as other undergraduate student research such as honours theses and directed research/creation.
- \*\*\* A project is considered in the range of *minimal risk* if “potential subjects can reasonably be expected to regard the probability and magnitude of possible harms implied by participation in the research to be no greater than those encountered by the subject in those aspects of his or her everyday life that relate to the research.” (*Tri-Council Policy Statement*, August 1998).