
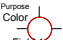



Instruments	Num In Inventory	Used	Remaining
	5	1	4
Accessories	Num In Inventory	Used	Remaining

Legend
 Purpose Color
 User Field
Gobo 1
Channel
Channel Number

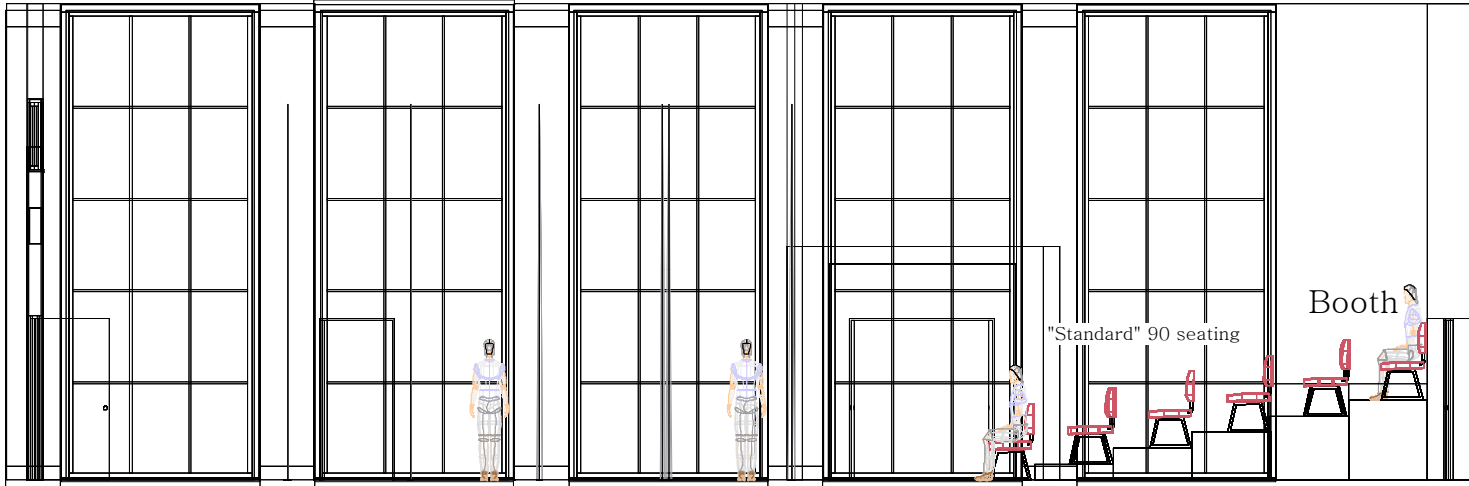
Glendon Theatre
 2275 Bayview Ave Toronto, ON M4N-3M6

Show: _____

Drawing By: _____

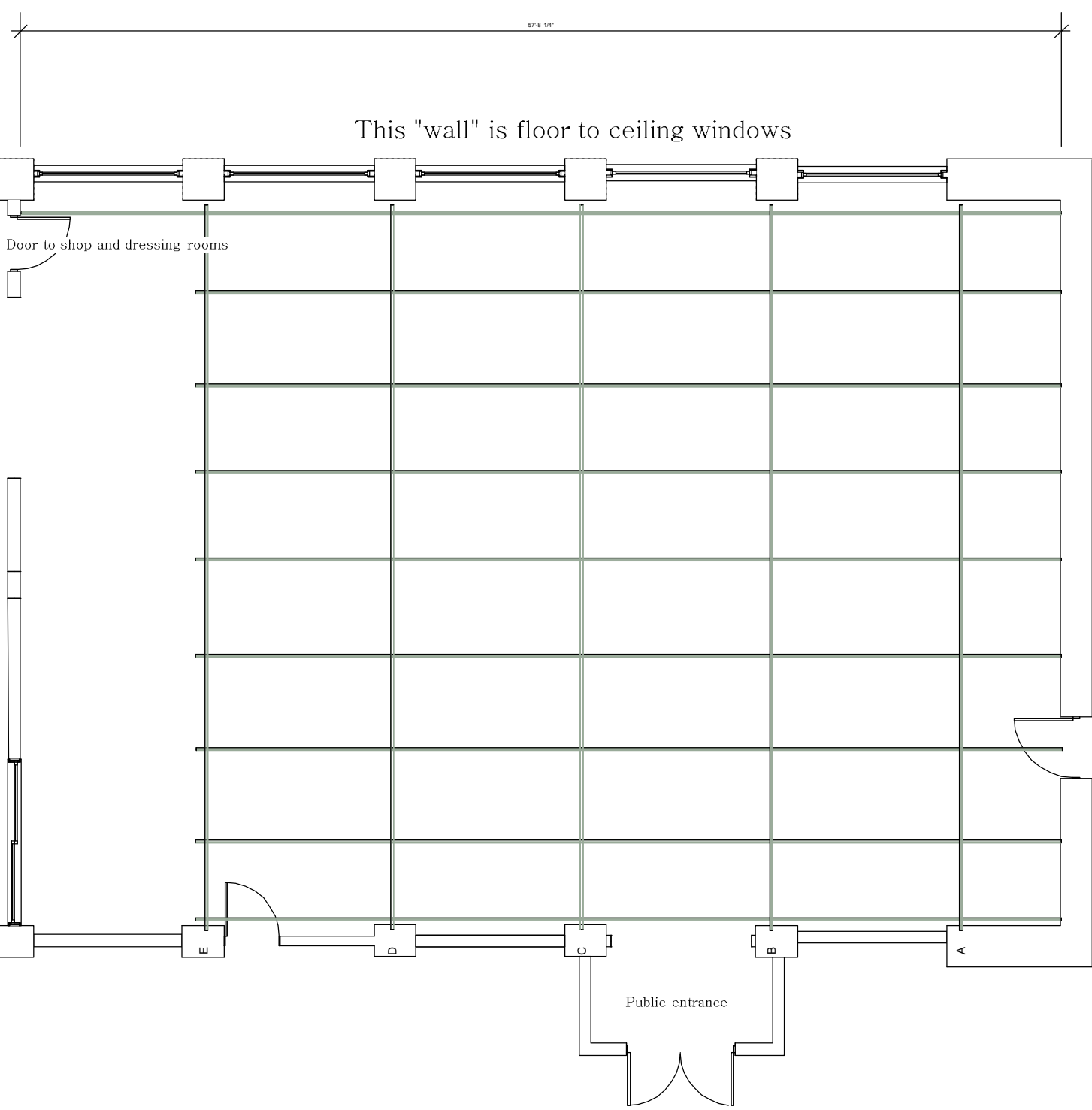
Scale: 1/8"=1'0" _____

All Critical Dimensions to be confirmed by Designer on Site



"Standard" 90 seating

Booth



This "wall" is floor to ceiling windows

Notes:

1. Lighting Grid is at 16' trim height.
2. There are 28 modular risers (approx 39-1/4" x 78-1/2"), with removable legs in 8" steps. These can either be used for audience risers, or for staging, or both.
3. We have an ever changing inventory of flats, wooden risers, step units, and other scenic things that can be seen in our storage room

Standard Drapery available:

Amount	Type	Width	Height
1	Bleached White Cyc	28'	14'-6"
1	Black Scrim	28'	14'-6"
4	Black velour standard legs	10'	14'
4	Black velour legs (need pipe)	9'	14'
3	Black velour borders	40'	3'
2	Black velour Traveller panels	21'	15'
2	Red velour Traveller panels	23'	12'
1	Red velour Border	46'	3'
4	21' Traveller tracks, with hardware		
2	16' Traveller tracks, with hardware		

Glendon Theatre

2275 Bayview Ave Toronto, ON M4N-3M6

Show:

Drawing By:

Scale: 1/8"=1'0"	Date:
-------------------------	--------------